

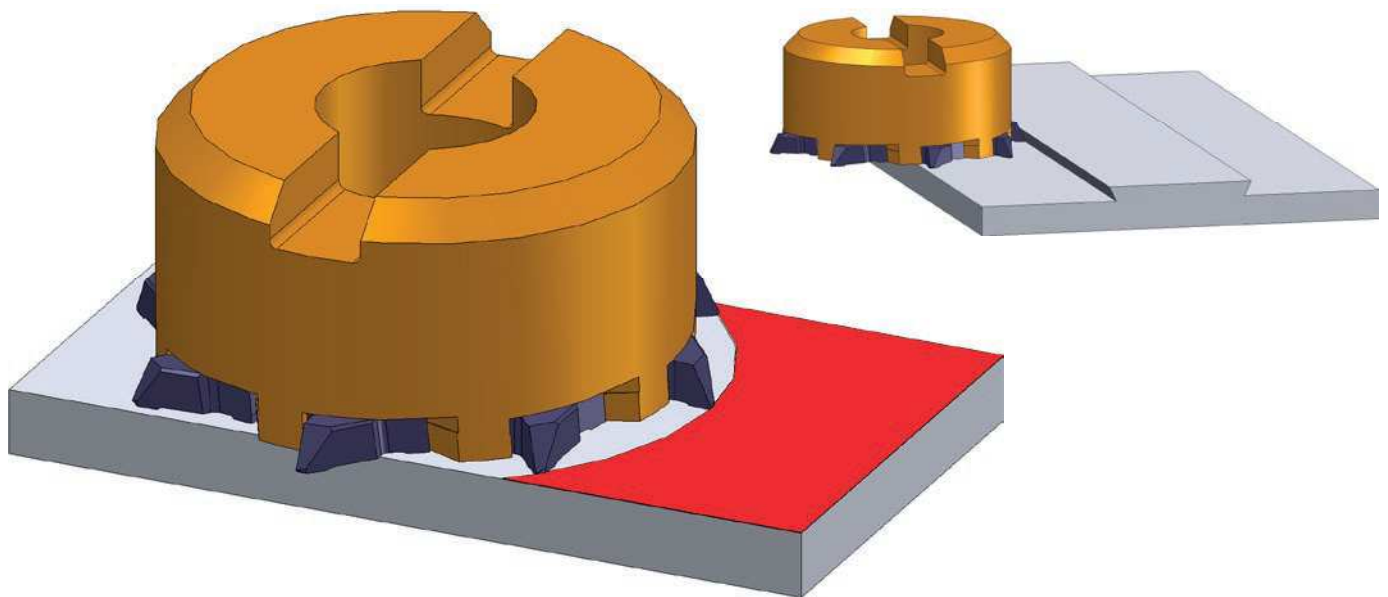
TriMILL

with Trailing Chamfer Edge for Very Good Surfaces to Finish Milling

Advantages of indexable inserts with integrated trailing chamfer

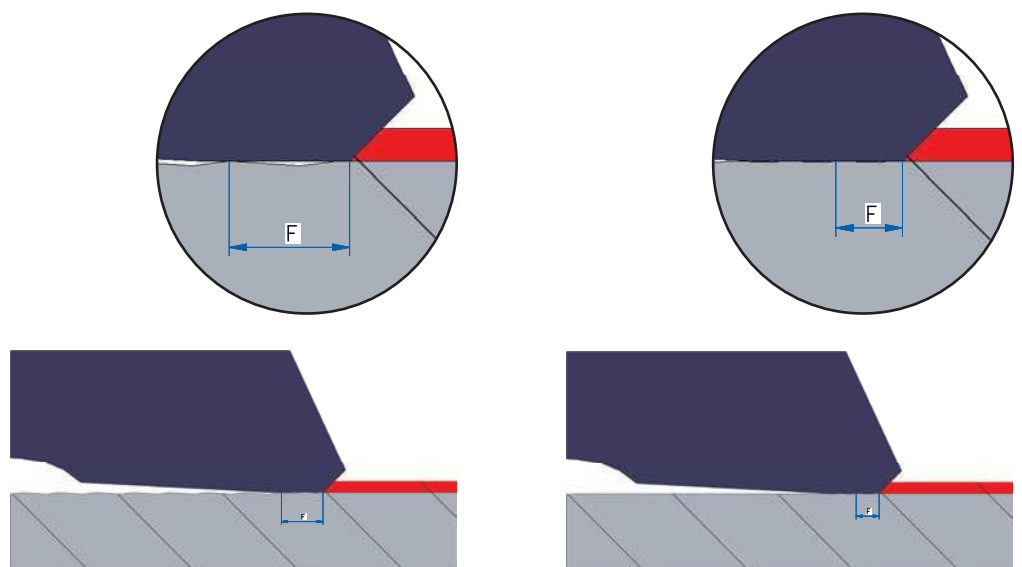
compared to standard indexable inserts with normal corner radius at same depth of cut:

- **2-3 fold better surface quality** with the same feed rate
- **2-3 fold higher feed rates** with the same surface quality



For high performance cutting in all areas, we have developed a variety of cutting geometries for internal and external milling operations. This trailing chamfer has the function of secondary cutting edge with mini-

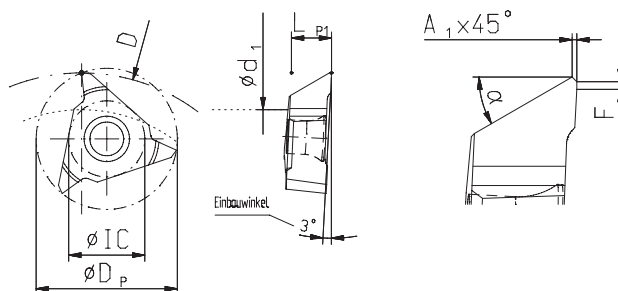
mal rear position and thus minimizes the secondary cutting edge angle to 0°. Thus the surface automatically improves to 2-4 times compared with the calculated values.



Slot Milling

- Insert holder see page 83-84
- Cutting data see page 189

2

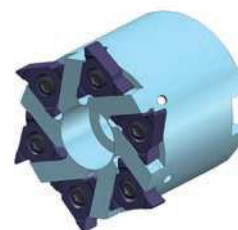
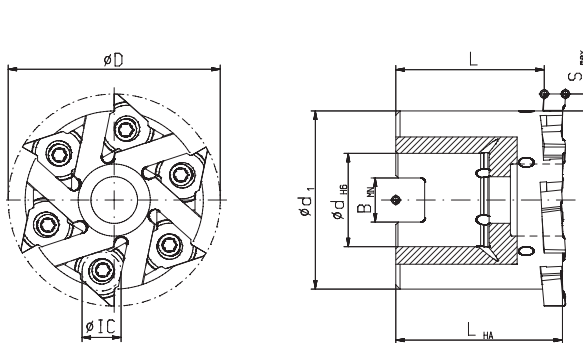


Typ **023** Typ **013**

Type	DP mm	IC mm	LP1 mm	A1 x 45° mm	F mm	α	Order No. TINAMATIC
023	17,5	9,2	5	0,3	0,5	25°	149516 NEW
013	23	12,4	6,5	0,3	0,5	28°	149472 NEW

Circular Milling Tools

- Inserts see page 83
- Cutting data see page 189



Typ 023		IC 9,2
Ø min. 40 mm	S max. 4,0 mm	

Order No.	Bore Ø min.	D mm	dH6 mm	d1 mm	S max. mm	LHA mm	L mm	BMN mm	Inserts
123461	55	50	22	42	3,9	39,3	34,97	10,4	6

Spare part No.

T15 IP Screw-driver	Screw
111671	107547

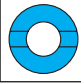
Screw torque max. 3,8 Nm


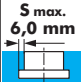
* Cutter clamping screw internal hexagon

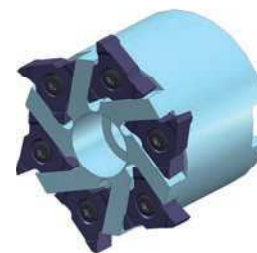
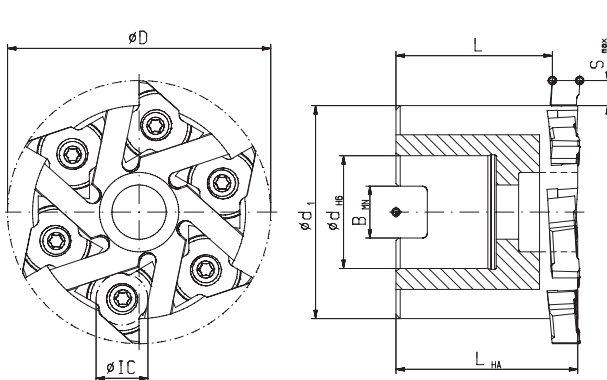
Order No.	114684
-----------	--------

Circular Milling Tools

- Inserts see page 83
- Cutting data see page 189

Typ **013**  **IC 12,4**

Ø min. 65 mm  S max. 6,0 mm 



Order No.	Bore Ø min.	D mm	d H6 mm	d1 mm	S max. mm	L HA mm	L mm	B MN mm	Inserts
123435	65	63	27	51	6	43,5	37,5	12,4	6


Spare part No.


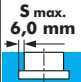
T20 IP Screw-driver	Screw
111594	107551

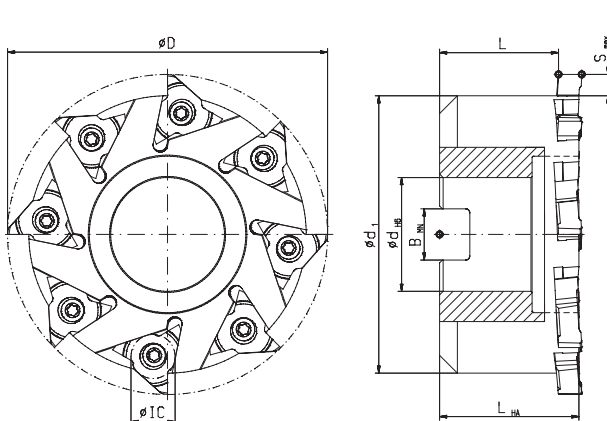
Screw torque 5,5 Nm

Cutter clamping screw internal hexagon

Order No. 114695

Typ **013**  **IC 12,4**

Ø min. 95 mm  S max. 6,0 mm 






Order No.	Bore Ø min.	D mm	d H6 mm	d1 mm	S max. mm	L HA mm	L mm	B MN mm	Inserts
123436	95	90	32	78	6	39,2	33,5	14,4	8

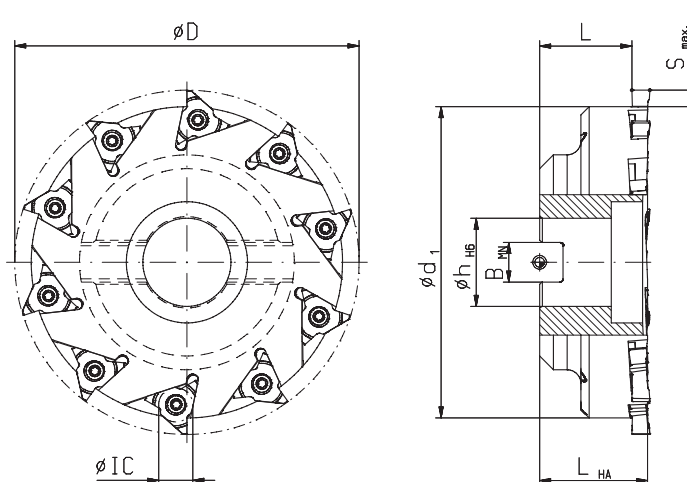
Spare part No.

T20 IP Screw-driver	Screw
111594	107551

Screw torque 5,5 Nm

Typ **013**  **IC 12,4**

Ø min. 95 mm  S max. 6,0 mm 



Order No.	Bore Ø min.	D mm	d H6 mm	d1 mm	S max. mm	L HA mm	L mm	B MN mm	Inserts
134561 NEW	130	125	32	113	6,0	39,2	33,5	14,4	10

Spare part No.

T20 IP Screw-driver	Screw
111594	107551

Screw torque 5,5 Nm